



HDS

FRONT COVER		
CONTENTS 01	INTRODUCTION 02	
1 03	STUDIO ONE 04	
STUDIO TWO 05	2 06	
STUDIO THREE 07	3 08	
4 09	STUDIO FOUR 10	
STUDIO FIVE 11	5 12	
TRANSMISSION SUITE 13	NEWS STUDIO AND PACK SHOT STUDIO 14	
LINEAR/NON-LINEAR EDIT SUITES 15	DUBBING SUITE QUANTEL GRAPHIC SUITE TAPE TRANSFER FACILITIES 16	
SET CONSTRUCTION 17	PLAN 18	PLAN 19
	FACILITIES 20	BACK COVER MAP / LOCATION

WELCOME TO HDS STUDIOS,

HDS is one of the largest Independent Broadcast Studio Production Facilities for Television, Film, Commercials and Transmission.

The 125,000 sq. ft complex has been developed over a number of years incorporating the changes within the broadcast industry.

A quality digital production facility that is attentive to the costs and budgets of our clientele. A production centre that is versatile and caters for all your requirements; 'flexibility' is the key word at HDS.

Individual studios are integrated with Production, Video and Sound galleries and Post-Production facilities. The complex is linked to the BT tower via optical lines. Our Transmission Suite can assist to broadcast your programme/channel anywhere, even onto satellite.

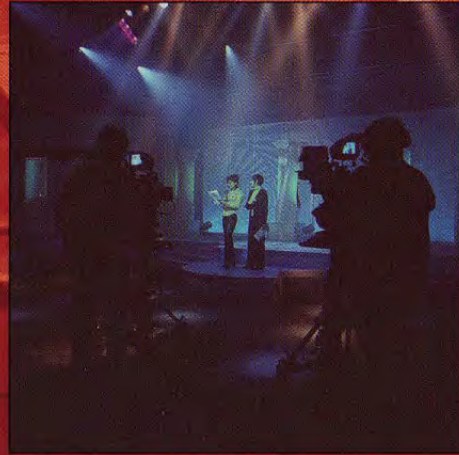
There are seven spacious studios of varying size for Drama, Light Entertainment, Soaps, Debates, Discussion shows, News and Live Entertainment, with or without audiences. The technical digital facilities reflect the development of the complex. Productions are recorded in 16x9 or 4x3 switchable formats. Sony equipment dominates the centre using superior Sony 570 digital studio camera heads, with Canon lenses, supported on Vinten Osprey Elite pedestals. Phillips DD10 and Phillips DD20 production mixers await your selective programme. Digital Betacam and SX recording facilities. Dressing rooms, Makeup and Production offices. Onsite cafeteria and bar facilities

Strategically located in West London, ten minutes from Heathrow with easy motorway links to the M4, M40 and the M25.



1

Studio



This large studio offers a flexible environment. The four-sided infinity cyc will allow scenic artists to let their imagination and creativity excel without limitation. Audience seating is available. 120 comfortable pop up seats, tiered block seating. The spacious area can accommodate a variety of shows with varying studio sets.

Included are production offices, makeup and hairdressing, dressing rooms and wardrobe facilities. Thus, making it a self-contained studio for dry hire.

Gallery One can provide four camera productions or this can be switched to Gallery Two, which can accommodate six to eight cameras. Allowing total flexibility for your production.

Technical specification for gallery one:

Vision Production Gallery

- 4 x Sony 570 cameras, wide screen switchable with Canon lens
- Vinten Osprey Elite pedestals
- Master set-up and RCP panels
- BTS DD10 Vision mixer
- Pinnacle FX DEKO Character Generator
- Vision control area
- VTRs area
- Trilogy talkback system

Sound Control Gallery

- 32 channel DDA sound console
- CD player, mini disk, DAT machine

Lighting Control

- Avolite pearl lighting console with mobile panel for setting from studio floor
- Avolite dimmer racks / 72 Channels 2.5Kw / 48 Channels 5Kw
- Scaffold lighting grid with 120 power points to a flexible patching system

Technical specification for gallery two:

Vision Production Gallery

- 6 x Sony 570 cameras, wide screen switchable with Canon lens
- Vinten Osprey Elite pedestals
- Master set-up and RCP panels
- BTS DD20 Vision mixer
- Pinnacle FX DEKO Character Generator
- Vision control area
- VTRs area
- Trilogy talkback system

Sound Control Gallery

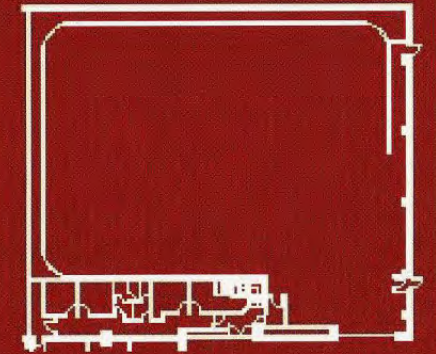
- 48 channel sound console
- CD player, mini disk, DAT machine

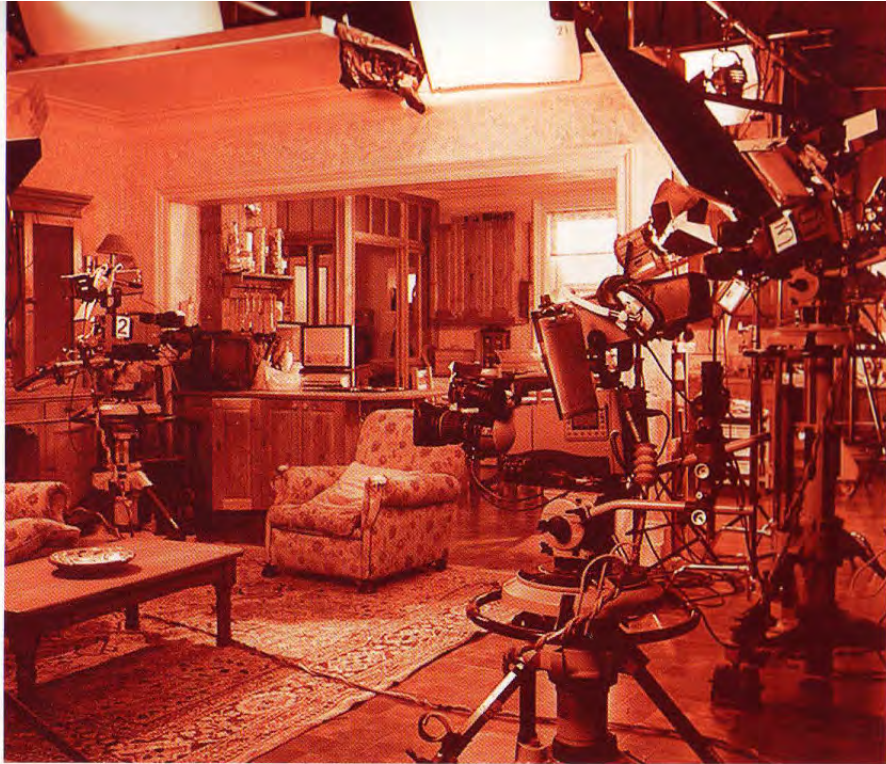
Lighting Control

- Avolite pearl lighting console with mobile panel for setting from studio floor
- Avolite dimmer racks / 72 Channels 2.5Kw / 48 Channels 5Kw
- Scaffold lighting grid with 120 power points to a flexible patching system



total area - 8,000 sq ft, working area - 76' x 92' / 23m x 28m, grid height - 23' / 7m



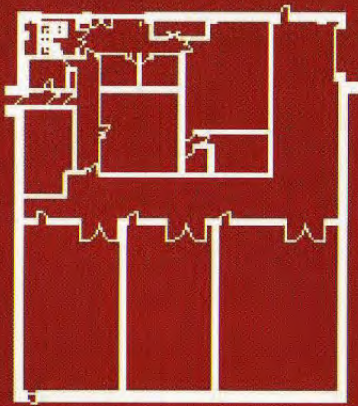


This has been split into three individual sized studios: (A) 2000 sq. ft, (B) 1800 sq ft and (C) 1900 sq. ft. Side by side they offer independent recording capabilities. Each is fitted with the full specification for technical facilities with independent lighting. Access is through five metres high by four metres wide soundproofed doors.

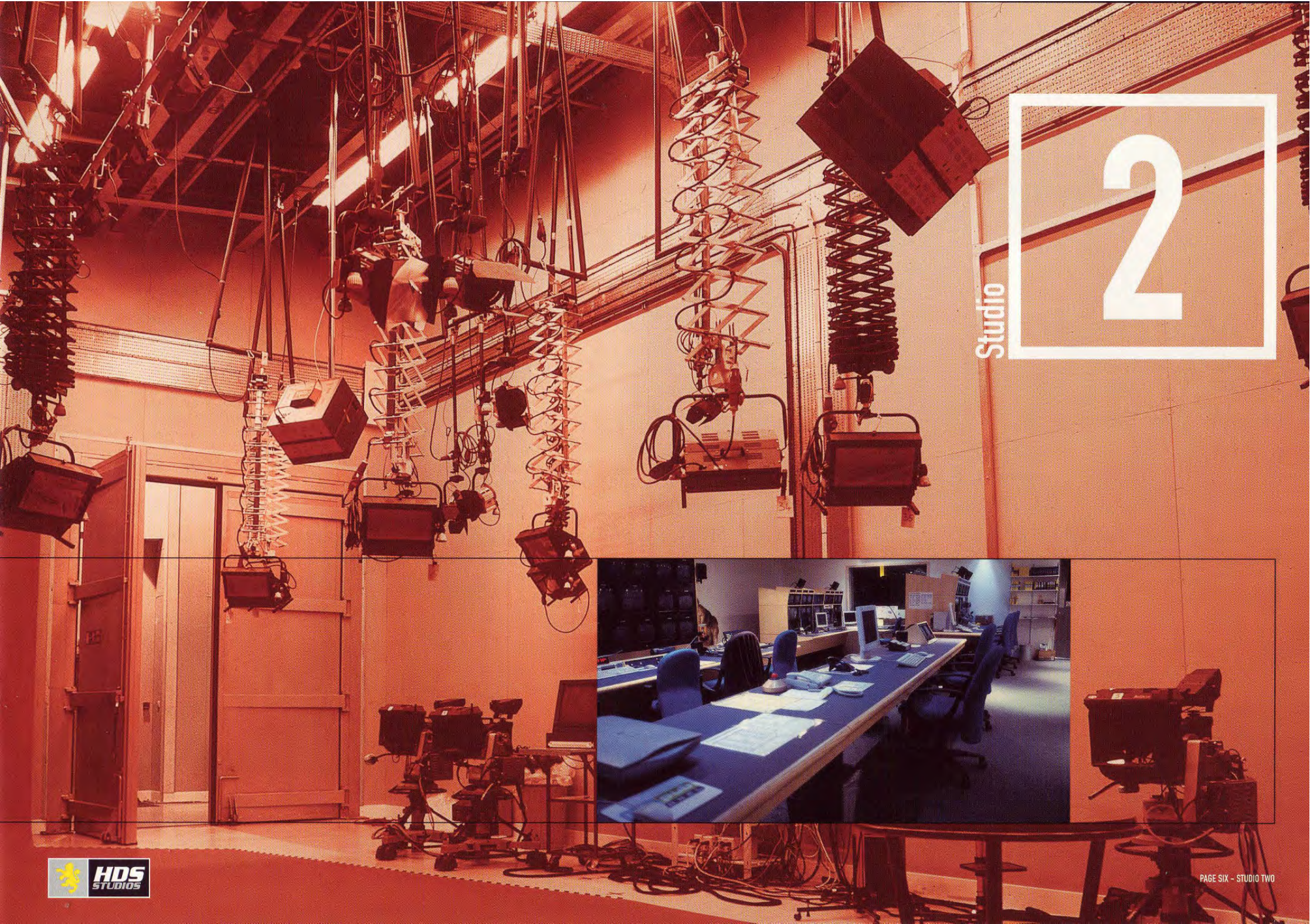
These studios are 'virtual reality' equipped.

Within this development are three independent Production, Video and Sound Galleries located on the ground floor and first floor. Two editing suites and the main CAR area house the heart of the equipment that is readily available for your production.

Studios



areas - (A) 2000 sq ft, (B) 1800 sq ft and (C) 1900 sq ft, grid height - 23' / 7m



Studio

2





Technical specification for gallery three:

Vision Production Gallery

- 4/6 x Sony 550 cameras, wide screen switchable with Canon lens
- Vinten Osprey Elite pedestals
- Master set up and RCP panels
- BTS DD10 Vision mixer
- Insciber Character Generator
- Vision control area
- VTRs area
- Trilogy talkback system

Sound Control Gallery

- 32 channel DDA sound console
- CD player, mini disk, DAT machine

Lighting Control

- Avolite pearl lighting console with mobile panel for setting from studio floor
- Avolite dimmer racks / 72 Channels 2.5Kw / 48 Channels 5Kw
- Scaffold lighting grid with 120 power points to a flexible patching system from studio floor



total area - 11,280 sq ft, working area - 119' x 60' / 18m x 36m, grid height - 23' / 7m

Studios

This long, large studio offers long-term capabilities where sets may be left standing and recording set to set easily possible.

Car commercials & action sequences suit this studio and allows any large production to have everything under one roof, ample setting space. Audience seating is available either tiered or blocked, dependant on your requirements.

The independent Production and Sound Gallery allow you to record your programme at your leisure.



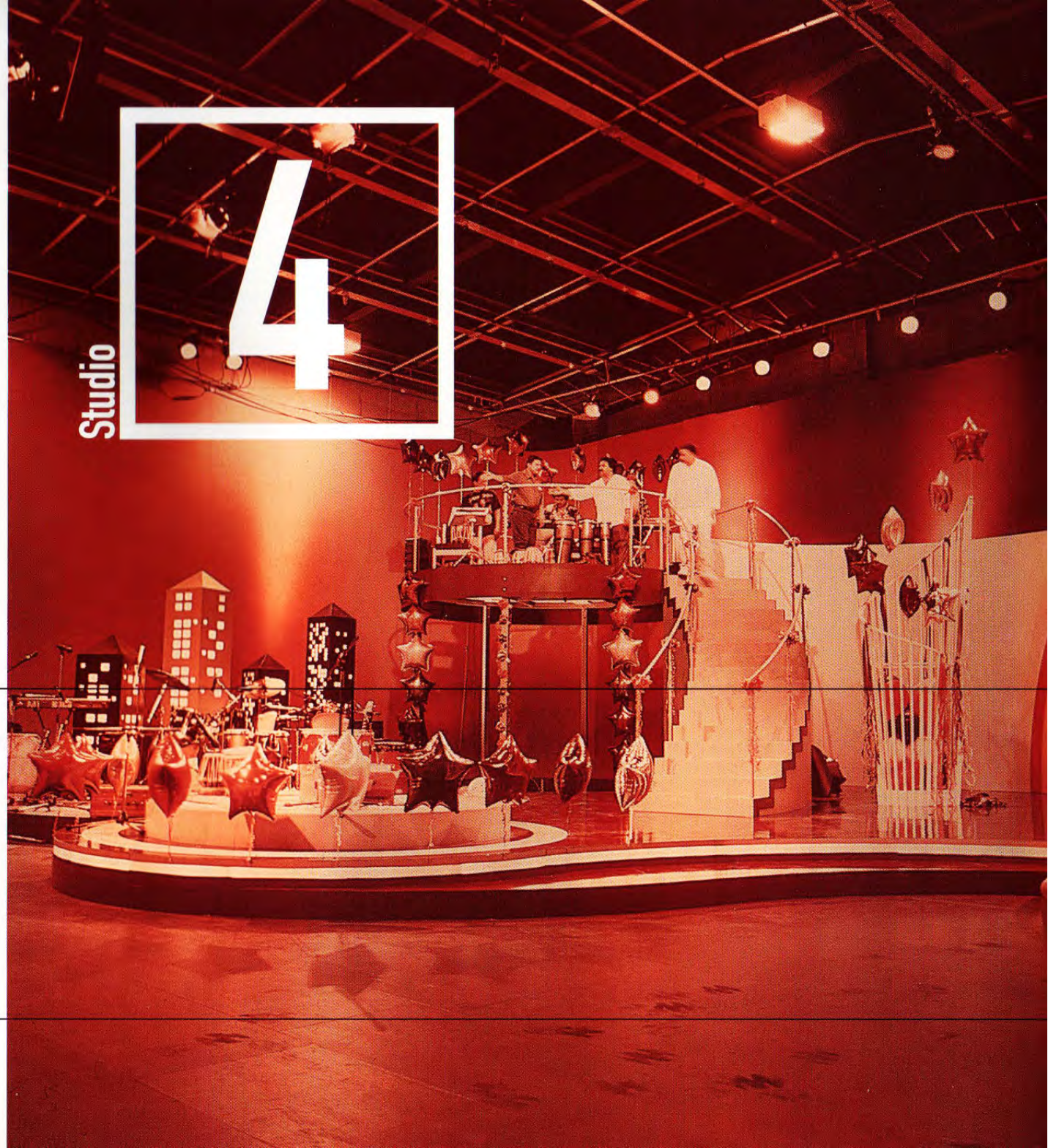
This is a medium to large sized studio, which comfortably copes with pop shows, audience chat or debate shows. That 'morning Breakfast' show transmitted live if so desired. Sitcoms, Dramas and Light Entertainment fit into this studio. The versatility and space allows for any programme format. Audience seating for 120 comfortably or 200 block tier seating.

Production, Video and Sound Gallery One is linked to studio four allowing up to four cameras. Should you have the requirement for additional cameras then Gallery Two may be linked allowing six cameras.



Studio

4



Technical specification for gallery one:

Vision Production Gallery

- 4 x Sony 570 cameras, wide screen switchable with Canon lens
- Vinten Osprey Elite pedestals
- Vinten Quartz studio pedestals
- Master set-up and RCP panels
- BTS DD10 Vision mixer
- Pinnacle FX DEKO Character Generator
- Vision control area
- VTRs area
- Trilogy talkback system

Sound Control Gallery

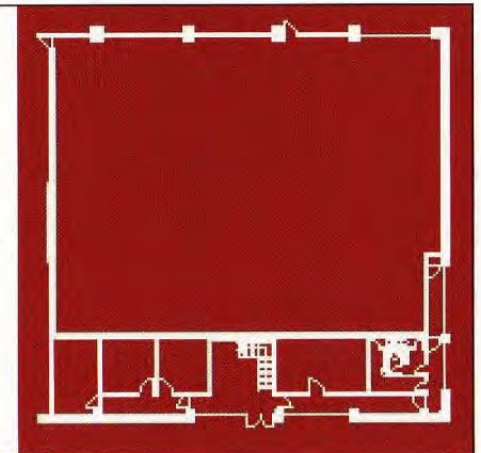
- 32 channel DDA sound console
- CD player, mini disk, DAT machine

Lighting Control

- Avolite pearl lighting console with mobile panel for setting from studio floor
- Avolite dimmer racks / 72 Channels 2.5Kw / 48 Channels 5Kw
- Scaffold lighting grid with 120 power points to a flexible patching system



total area - 6,530 sq ft, working area - 70' x 85' / 21m x 26m, grid height - 23' / 7m





Technical specification for gallery two:

Vision Production Gallery

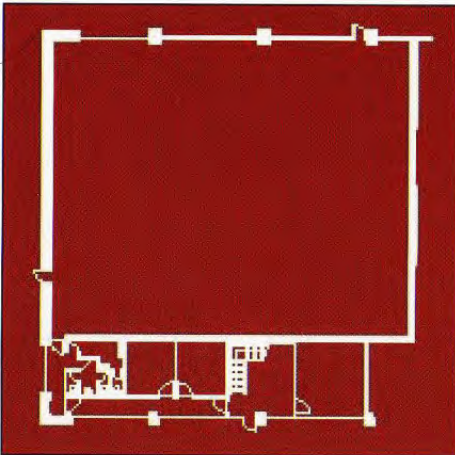
- 6 x Sony 570 cameras, wide screen switchable with Canon lens
- Vinten Osprey Elite pedestals
- Master set-up and RCP panels
- BTS DD20 Vision mixer
- Pinnacle FX DEKO Character Generator
- Vision control area
- VTRs area
- Trilogy talkback system

Sound Control Gallery

- 48 channel sound console
- CD player, mini disk, DAT machine

Lighting Control

- Avolite pearl lighting console with mobile panel for setting from studio floor
- Avolite dimmer racks / 72 Channels 2.5Kw / 48 Channels 5Kw
- Scaffold lighting grid with 120 power points to a flexible patching system



total area - 6,530 sq ft, working area - 70' x 85' / 21m x 26m, grid height - 23' / 7m

Studios

Studio

5

This is a medium sized studio but large enough to cope with audience, chat or debate shows. Ideal for that shopping window you may wish to record or transmit live. Sitcoms and light entertainment shows fit into this studio comfortably. Audience seating for 120 comfortably or block tier seating for 200.

Production Gallery Two is linked to this studio allowing up to six cameras. The Sound gallery housed on the ground floor caters to a 48-channel desk

TX

Transmission Suite

HDS designed and built a transmission suite dominated with Sony equipment.

The Flexicat and Raid system allows automated 24-hour transmission. Linkable to any studio or Production Gallery for live output. Lines to and from BT Tower readily available.



News Studio and Gallery / working area - 20' x 20'

A self-contained news/small discussion studio linked to its own Production Sound Gallery, independent from the rest of the complex. It has a direct Reuters live feed, which is linked to a DPS online non-linear edit suite, allowing instant news edit as and when required.

The gallery provides both Digital Betacam and SX recording facilities

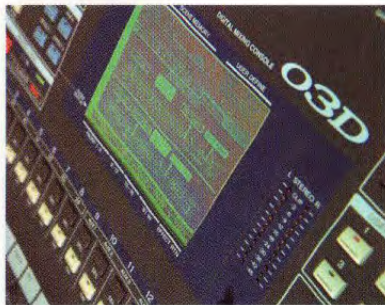
Technical Specification:

- 2 x Sony cameras with Canon lenses
- PSP digital vision mixer
- Trinity DVE and character generator
- DPS velocity on line non-linear edit suite connected to Reuters
- 12 channel audio mixer

Pack Shot Studio / working area - 14' x 10'

A small studio with an infinity cyc painted chromakey blue with a mini scaffold lighting grid. This is ideal for pack shot or chromakey recording.

Facilities can be linked to one of the galleries or Eng. Filming established to suit your requirements.



NEWS STUDIO



EDIT

Linear/Non-Linear Edit Suites

HDS has eight fully equipped, digital on-line edit suites for fast editing. All suites are available for dry hire or with editor if required.

On Line Linear Editing Suites

Technical specification:

- Sony BE 9100 edit controller
- Sony DMX E3000 sound mixer
- 3 digital Betacam VTRs – on request
- Abekas 8100 digital vision mixer with colour corrector
- Abekas A53 DVE
- Abekas A72 caption generator

On Line Non-Linear Editing Suites

Six online DPS suites uniquely designed by HDS set up for fast short news or short production inserts. Real time editing, linked through a main router system, which can receive material on Digital Betacam, SX and Beta SP. All six suites can be independently run or linked together if required.



Dubbing Suites

The facility offers two digital dubbing suites designed with Soundscape dubbing with non-linear editing.

Technical specification:

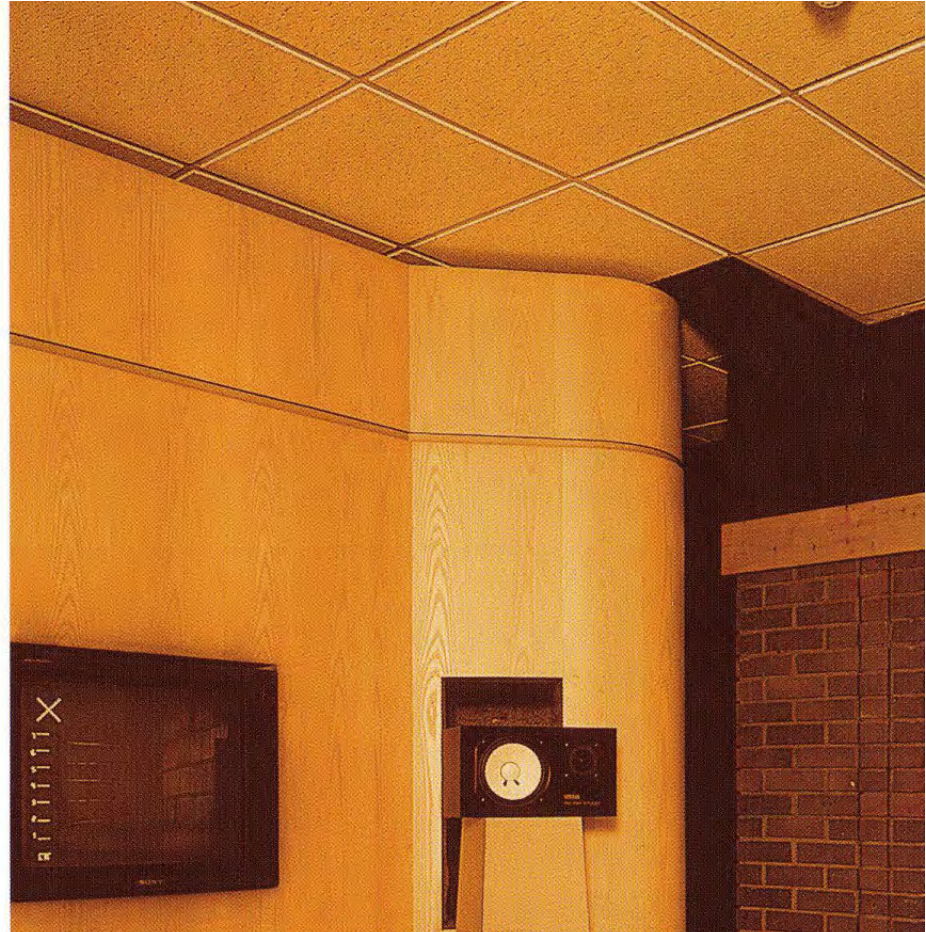
- Soundscape (Red)
- Yamaha o2R digital sound console
- Miff time code synchroniser
- Digital Betacam VTR

Quantel Graphic Suite

- Quantel Hal
- Quantel paintbox
- DPS velocity suite
- Rostrum camera
- Inscrber Character Generator
- PC Based, Photoshop 3D max and Quark Express

Tape Transfer Facilities

Our tape transfer room allows easy transfer from Digibeta to SX and or Beta SP. Within this area tape to tape editing is simple fast and effective. Supported by a Yamaha mixer allowing effective tape transfer, the system also includes Dehisser/Declicker facilities.



Set Construction

Set Construction

HDS has 40,000 sq ft construction workshop facilities readily available to build any studio/location set, including Setting and Striking crews. Versatility for Drama, Soap, Light Entertainment, Discussion/Debates, Quiz programmes, Children's programmes. The resources are infinite; incorporating anything from timber, steel or fibreglass construction.

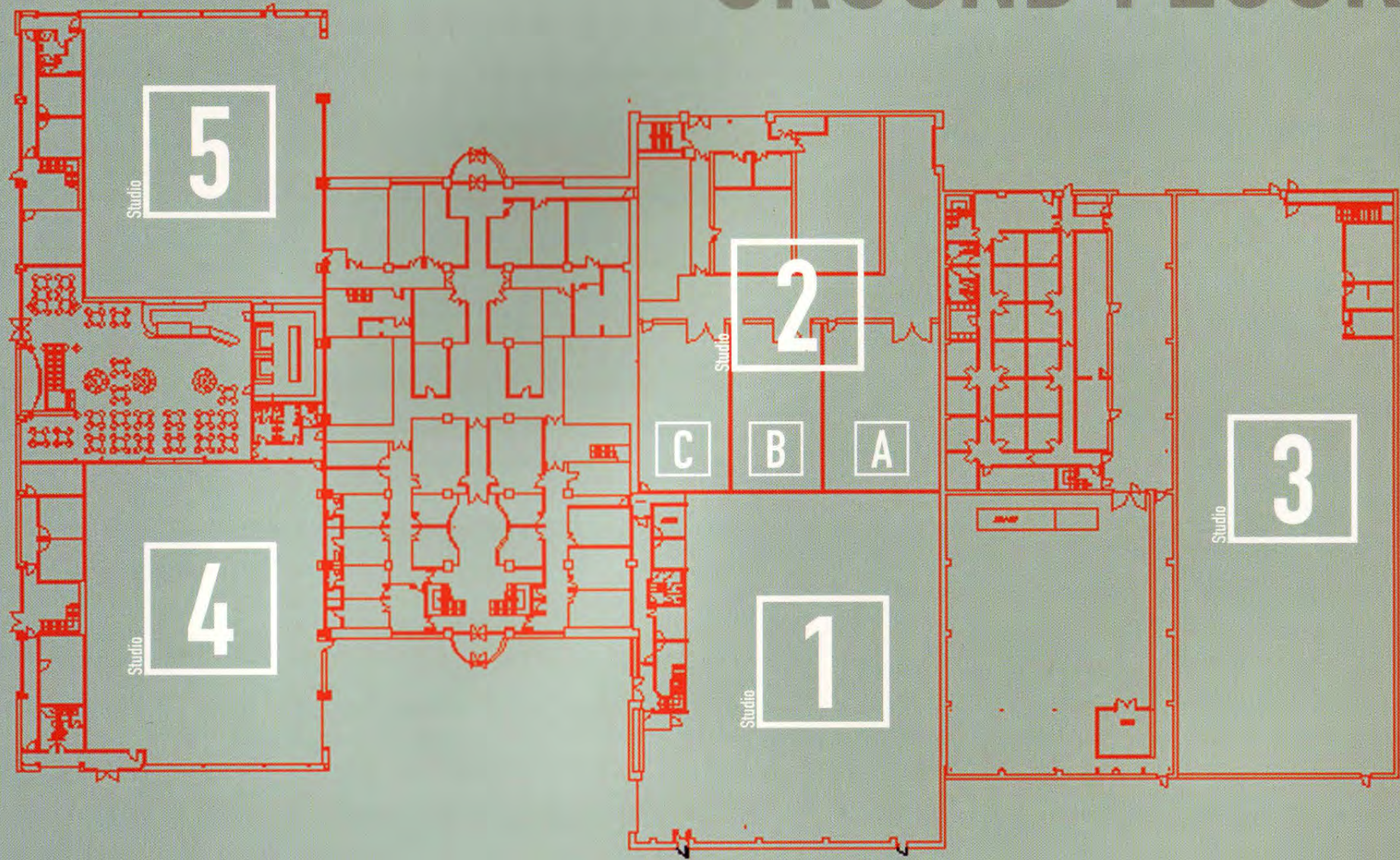
The Company has 27 years of set construction experience, having serviced the mainstream Broadcasting Companies, BBC, regional and London, Channel Four, Channel Five, LWT, BSkyB, Scottish TV, Carlton TV.



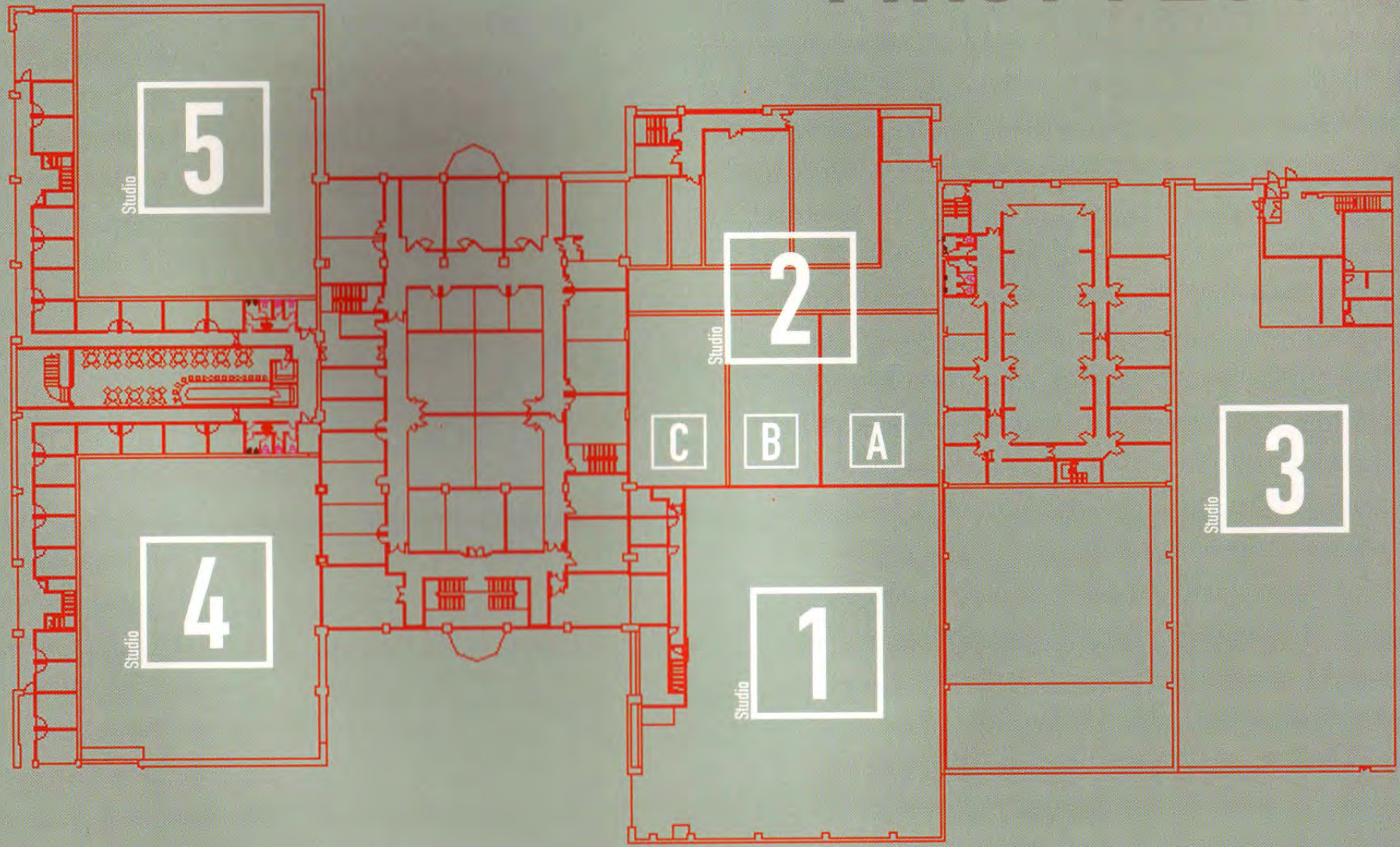
BUILD



GROUND FLOOR



FIRST FLOOR



Facilities

Cafeteria

The new cafeteria seats up to 200 persons daily for breakfasts, lunches and dinners. This facility may also be used for special functions. Our chef and his team are willing to assist with your catering requirements.

Bar

Our newly designed licensed bar offers facilities from a simple drink after work to post production celebrations. Seats 120 persons.

The bar is also available for formal or informal, corporate or private functions.

Production Offices, Make-up, Wardrobe Dressing and Green Rooms

HDS Studios is able to offer a variety of production offices to meet with all types of production requirements. The fully equipped make-up rooms include hair-washing facilities. Dressing rooms are available in different sizes to suit production requirements.

Crew

The facility is able to offer a vast selection of production crew, studio floor, production gallery or technical crew.



FOOD & BAR

